

95 Express Monthly Operations Report – August 2016

General

In total, the 95 Express Lanes:

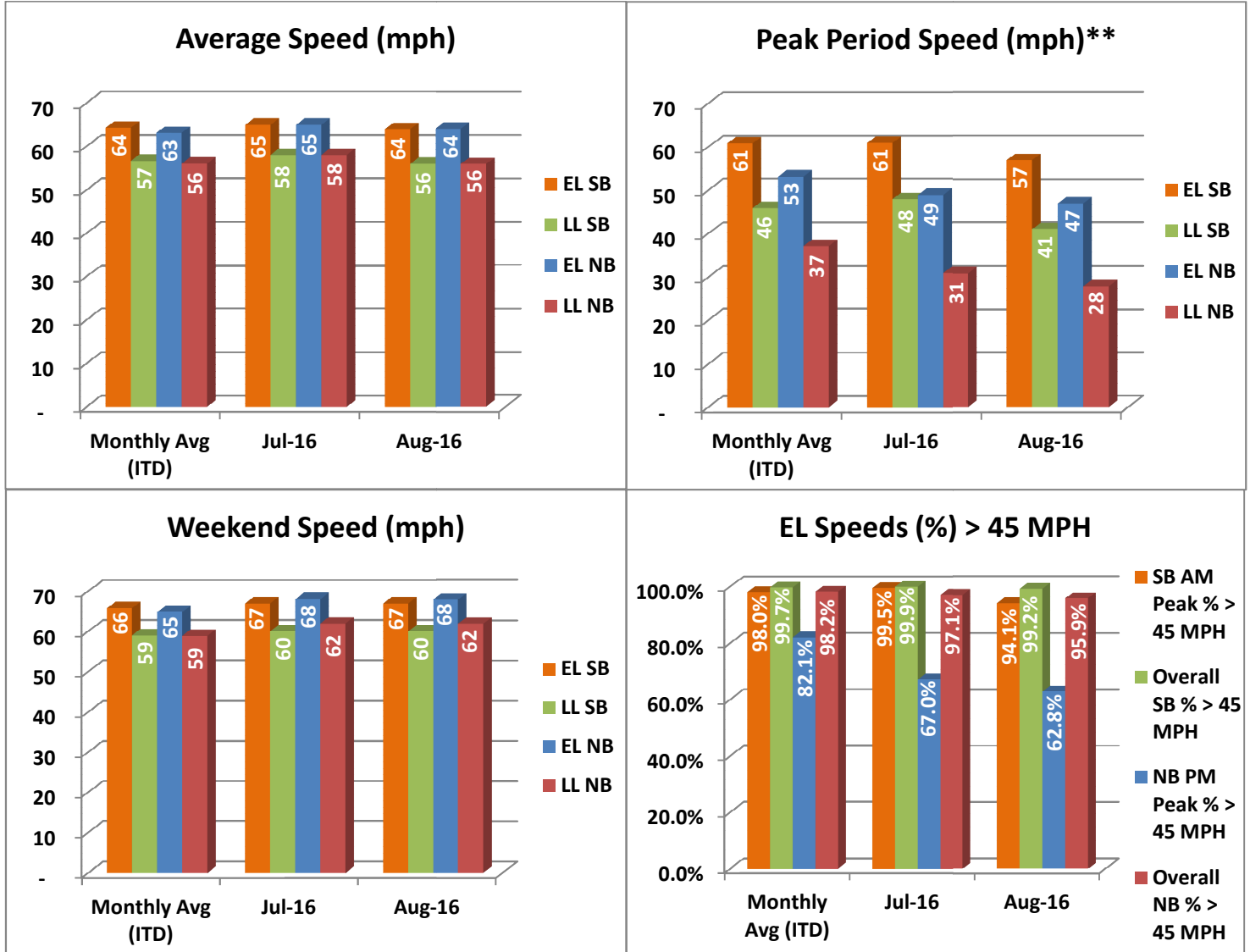
- ✓ Serviced 1,847,998 vehicle trips in August 2016 (approximately 15.0 million trips in 2016 to date), bringing the total since opening (December 5, 2008) to approximately 145.9 million trips.
- ✓ Had estimated monthly toll revenue of \$2.54 million in August 2016 (approximately \$22.0 million in 2016 to date), bringing the total revenue since opening to date to approximately \$146.5 million.

Increased to a total of 9,116 registered vehicles; resulting in 74,366 toll exempt trips.

<u>August 2016 Statistics</u>	<u>Southbound</u>		<u>Northbound</u>			
Total Trips	969,768		878,230			
Exempt Trips	38,663		35,703			
Revenue						
	\$957,994		\$1,583,757			
Tolls						
- Range	\$0.00 - \$8.50		\$0.00 - \$10.50			
- Avg. Weekday	\$1.28		\$2.47			
- Avg. Peak Period**	\$1.84		\$6.32			
- Avg. Weekend	\$0.50		\$0.51			
- Avg. Off Peak	\$1.11		\$1.49			
- 85 th Percentile	\$2.25		\$6.25			
Volume (veh)						
	EL	LL	EL	LL		
- Avg. Weekday	34,462	107,041	30,878	102,249		
- Avg. Peak Period**	9,224	17,594	7,019	15,906		
Speed (mph)						
	EL	LL	Δ	EL	LL	Δ
- Avg. Overall	64	56	8	64	56	8
- Avg. Peak Period**	57	41	16	47	28	19
Operated Above 45 MPH						
	99.2%		95.9%			
Remained Open to Motorists						
	94.0%		92.2%			
Closed due to Planned Construction						
	3.5%		3.6%			
Closed due to Non-recurring Events						
	2.5%		4.2%			
<i>EL (Express Lanes); LL (Local Lanes); **Peak Period is defined as 6-9 AM (southbound) and 4-7 PM (northbound).</i>						

Operations/Traffic Statistics - Speed Data

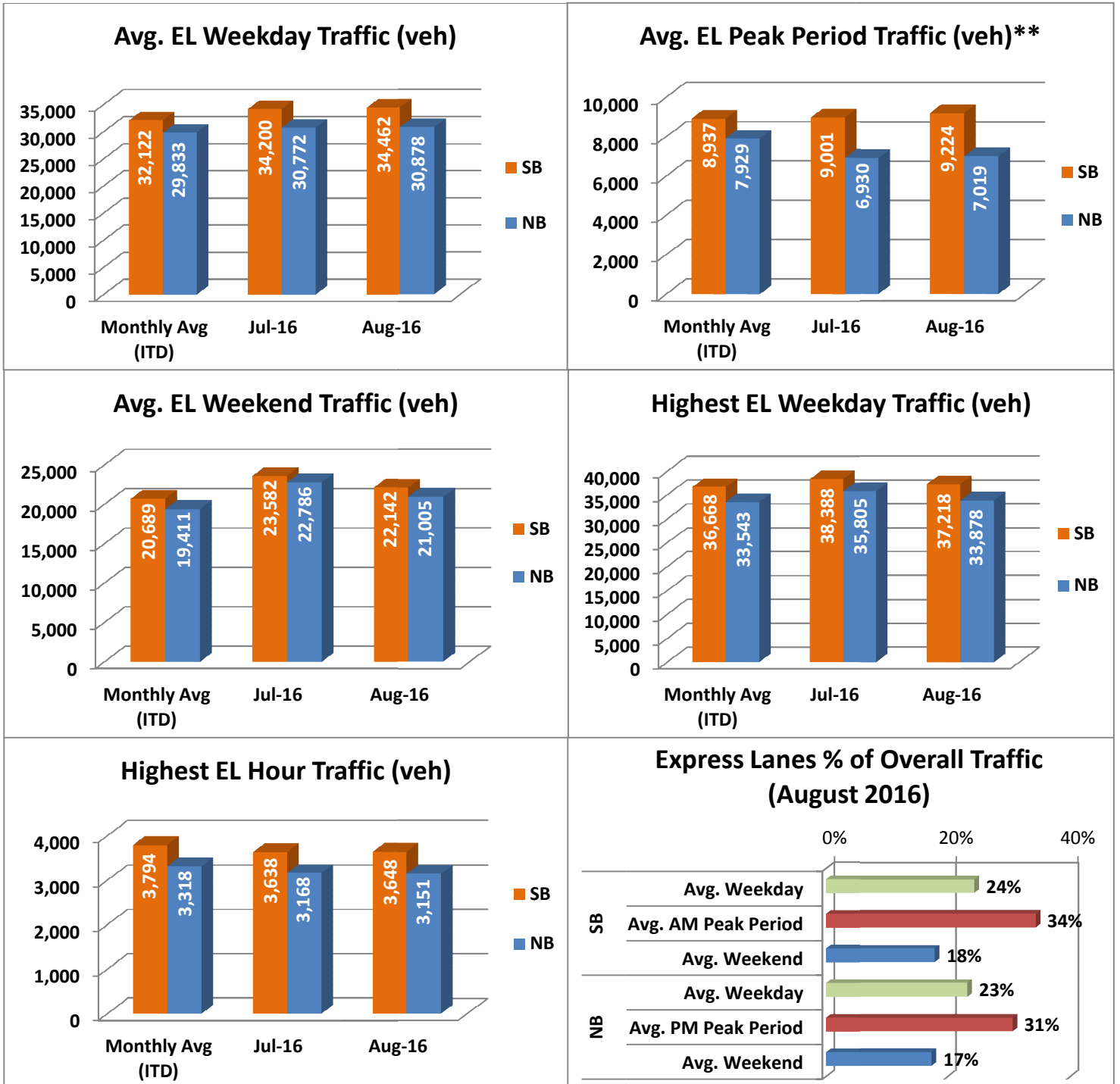
** Peak Period is defined as 6-9 AM (southbound) and 4-7 PM (northbound).



NOTE: ITD = Inception to Date; EL = Express Lanes; LL = Local Lanes

Operations/Traffic Statistics - Volume Data

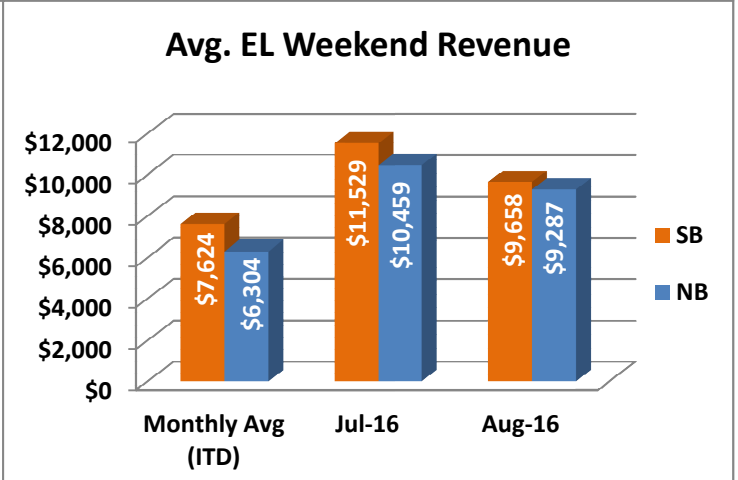
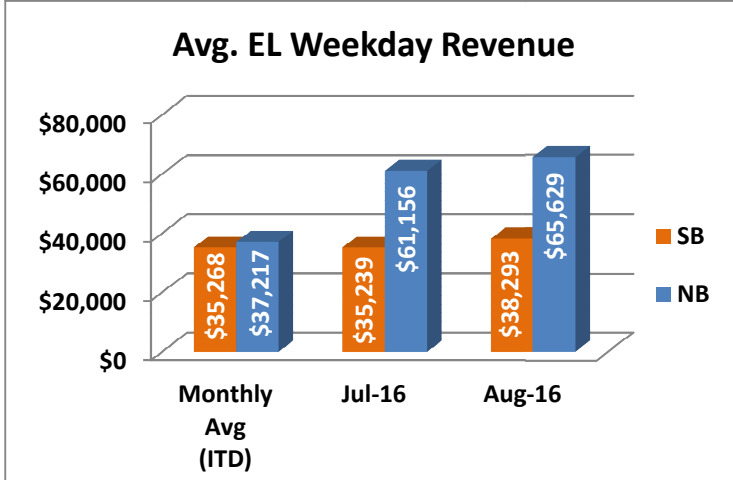
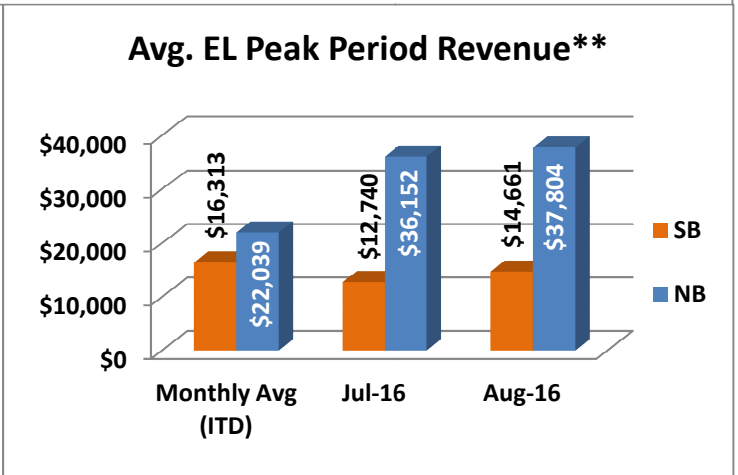
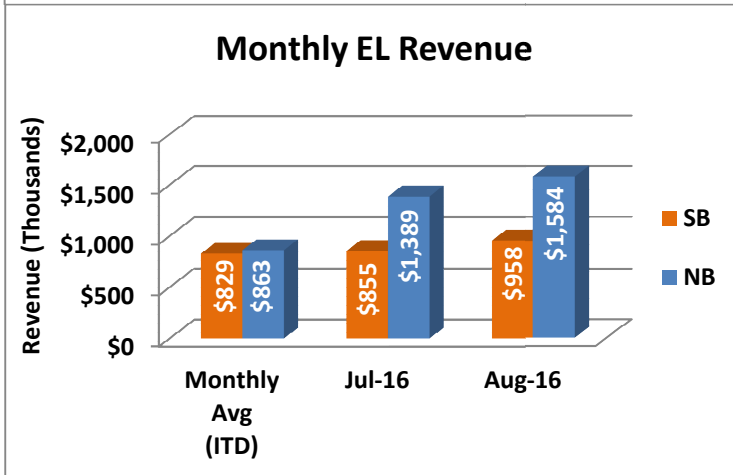
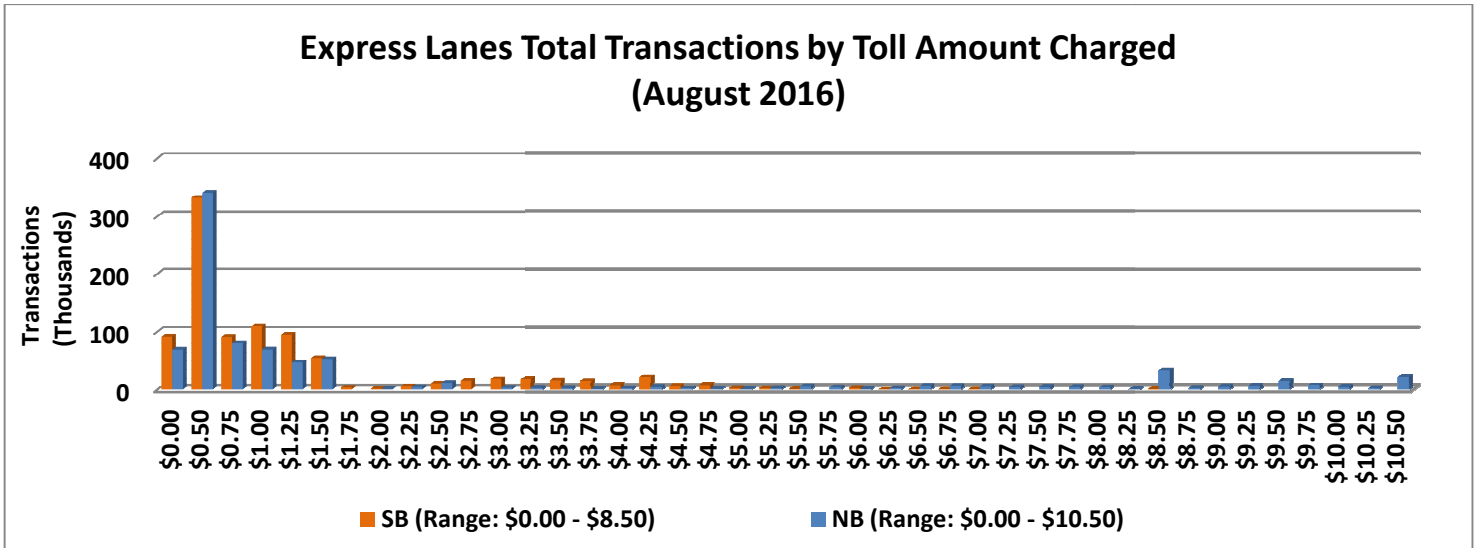
** Peak Period is defined as 6-9 AM (southbound) and 4-7 PM (northbound).



NOTE: ITD = Inception to Date

Revenue/Tolls Statistics

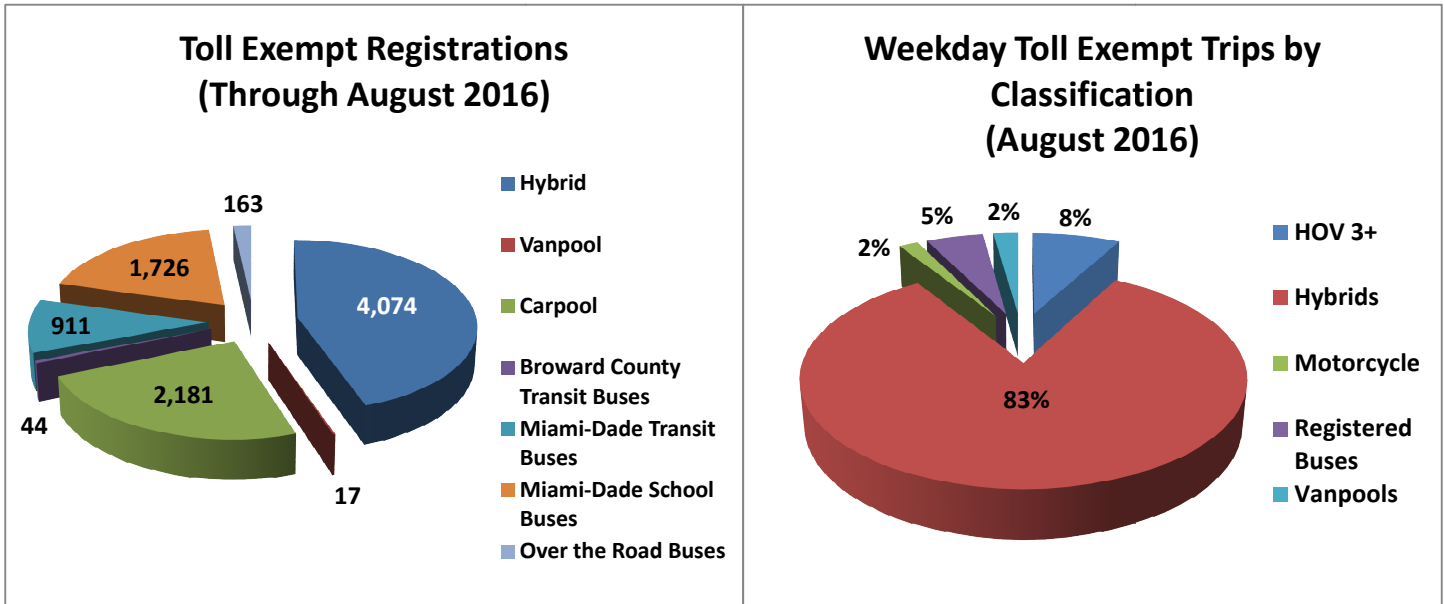
** Peak Period is defined as 6-9 AM (southbound) and 4-7 PM (northbound).



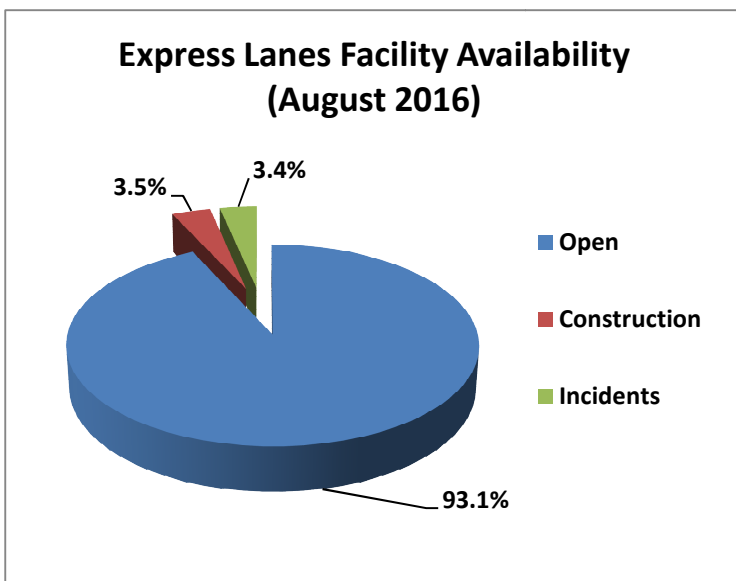
NOTE: ITD = Inception to Date

Registrations—Toll Exempt Trips

The total registrations through August 2016 increased to 9,116. The Weekday Toll Exempt Trips for this month are shown by classification below.



Facility Availability



The entire 95 Express lanes (both directions) were open to motorists 93.1% of the time, while closed 3.5% due to 10 planned construction/ maintenance events (each lasting approximately 5 hours, 16 minutes in duration, on average) and 3.4% due to 133 non-recurring events (each lasting approximately 23 minutes in duration, on average).